

# MARUMO STAGE LIGHTING & STUDIO LIGHTING





## INDEX

<b>Marumo lighting equipment for stage.....</b>	<b>1</b>
<b>Spotlights.....</b>	<b>2</b>
<b>Follow spotlights.....</b>	<b>9</b>
<b>Footlights.....</b>	<b>12</b>
<b>Borderlights.....</b>	<b>13</b>
<b>Cycloramalights.....</b>	<b>13</b>
<b>Floodlights.....</b>	<b>15</b>
<b>Effect machines.....</b>	<b>16</b>
<b>Distribution equipment.....</b>	<b>17</b>
<b>Magno-colors (color changers).....</b>	<b>21</b>
<b>Hanger, bases and stands.....</b>	<b>22</b>
<b>Color frame list.....</b>	<b>23</b>
<b>Lens list.....</b>	<b>24</b>
<b>Lamps list.....</b>	<b>24</b>



---

Beautiful climate, manners, and customs of Japan have produced abundant materials for artistical work. On their basis, stories poems, and dramas have been produced. In the field of public entertainment they have produced GAGAKU (Ceremonical court music) in the seven the century ; Noplay in the tweleth century; and JORURI, KABUKI later on. Since 1880 a plenty of arts including those ones from ancient time to modern times, such as ballets, operas, musicals and modern play have been brought into Japan from Europe and America, and they are put on the stages.

No one con find such a variety of theatical performances elsewhere in the world. Because Japan is favored with those factors essential for the production and performance of the Japanese theatrical play, with the excellent lighting technicians, and with the theaters and stage equipment befitting to them.

Since our MARUMO Denki company was established in 1919, the campany has grown up with its goal to improve the quality of lighting equipment for the stage, and to develop a new product.

The trade mark of 'MARUMO' is well known all over the world as the maker of excellent goods, and is a symbol of excellent technique. The company has constructed the lighting equipment for principal theaters, public halls, and principal television studios so that it is a top notch maker in this field.

In order to maintain its position, the company is striving in the survey of foreign markets, in the developmont of a new techniguce and the improvement of current techniques. The development project of new products has been undertaken by highly skilled and experienced engineers in the fields of electric machine engineering and theatrical play. And in 1996 MARUMO Denki company constructed the stage lighting equipment for the National theater and the Imperial theater, thoroughly using those technigues which our country boasts of all, over the world. According to the fansion MARUMO's stage lighting equipment are divided into spotlight, footlight, border light, floodlight, effect projector, color media and etc.

The efficiency and the function of each equipment are explained as follows.



MARUMO  
の  
照  
明  
機  
器  
は  
日  
本  
の  
文  
化  
を  
支  
え  
て  
こ  
の  
世  
代  
に  
も  
大  
に  
寄  
与  
を  
し  
て  
い  
ら  
せ  
ま  
す



## CE TYPE SPOT LIGHT

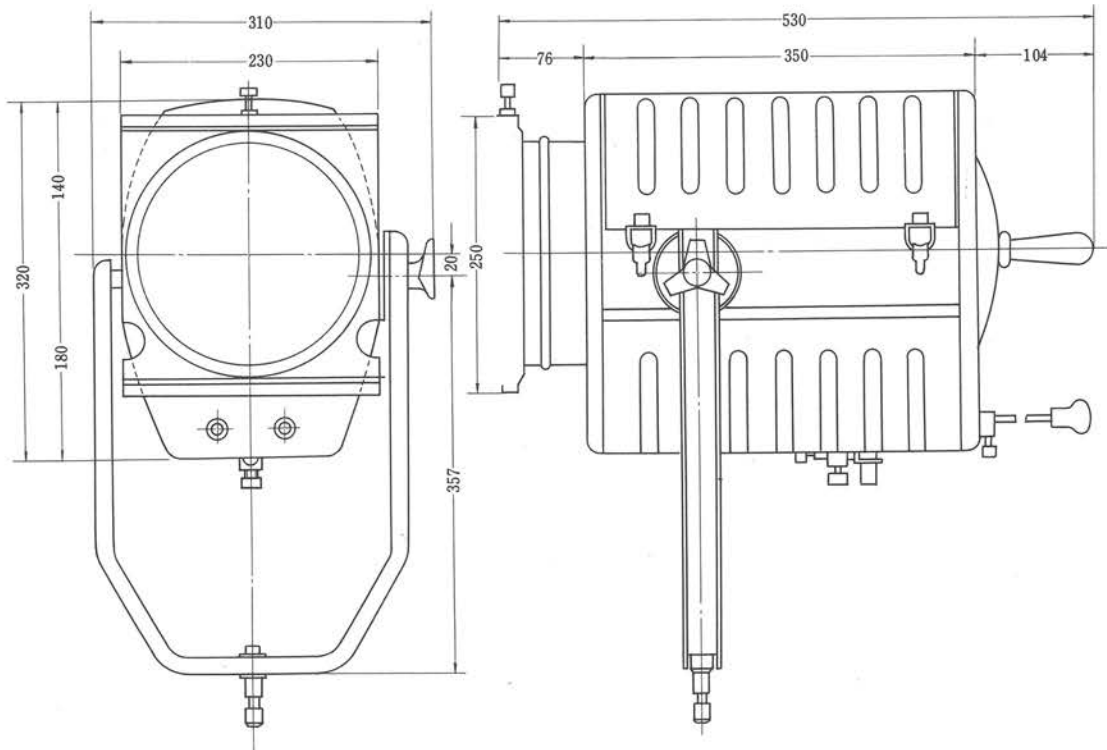
CE Type Spot Light is a standard type spot light which combines 8" lens with a back mirror. According to the purport of using it, its lens can be easily replaeed.

CEC Type spot Light uses a plano-convex-lens so it projects a rather sharp light on the stage.

CEF Type Spot Light uses a long focus fresnel lens. This long focus fresnel lens Which makes use of the advantage of plano-convex lens and fresnel lens is produced by MARUMO's engineers. Eliminating the spectrum and the defect that darkens the center of projection, it projects a uniform soft light on the stage though the outline is slightly dim.

CEO Type Spot Light makes use of an oval-beam fresnel lens, so it projects a uniform, soft oval light on the stage as CEF Type Spot Light does.

CEL Type Spot Light makes use of a plano-convex lens (8" diameter 14" focus). This is suitable to follow the light to the stage from a long distance.



---

## GENERAL INFORMATION

Sturdy light sheet steel housing construction  
heat resisting lens.  
baket black finish

---

CAT NO. 4250 (CEC Type)  
projection distance 15m-20m  
lamp 100 G-125 1,000W~1,500W  
plano-convex lens 8"D 10"F  
cable Captyre-cord 2mm<sup>2</sup> 2wire  
weight 9.1kg  
outer dimension 310×522×530

---

CAT NO. 4251(CEF Type)  
projection distance 15m  
lamp 100V G-125 1,000W~1,500W  
long focus fresnel lens 8"D 10"F  
cable captyre-cord 2mm<sup>2</sup> 2wire  
weight 7.4kg  
outer dimension 310×522×530

---

CAT NO. 4252 (CEO Type)  
projection distance 15m  
lamp 100V G-125 1,000W~1,500W  
oval beam fresnel lens 8"D 10"F  
cable captyre-cord 2mm<sup>2</sup> 2wire  
weight 7.4kg  
outer dimension 310×522×530mm

---

---

CAT NO. 4245 (CEC Type)  
projection distance 10m ~15m  
lamp 100V T-64 500W~750W  
plano-convex lens 6"D 8"F  
cable captyre-cord 0.75mm<sup>2</sup> 2wire  
weight 4kg  
outer dimension 230×435×420

---

CAT NO. 4255 (CEL Type)  
projection distance 20~25m 0mm  
lamp 100V G-125 1,500W  
plano-convex-lens 8"D 14"F  
cable captyre-cord 2mm<sup>2</sup> 2wire  
weight 9.5kg  
outer dimension 310×522×630mm

---



CAT. NO 4255



CAT. NO 4251





## MS TYPE SPOT LIGHT

Ms Type spotlight makes use of 8" fresnel lens, Ms Type spotlight makes soft edge lighting beam and it can project an efficient, soft light to the stage. Therefore this is very suitable for auditorium spots and ceiling spots at a short distance from the stage.

### GENERAL INFORMATION

Sturdy light sheet steel housing construction

baked black finish

CAT NO. 5563 (MS Type)

projection distance 10m

lamp 100V G-125 1,000W

heat resisting fresnel lens 8"D 120mmF

cable captive-cord 2mm<sup>2</sup> 2wire

weight 6.3kg

outer dimension 310×625×390mm



CAT. NO 5563

## SU TYPE SPOT LIGHT

Su Type spot light is the equipment for the exclusive use of suspension.

For the lighting of acting, this is suitable for projecting a light right under from the upper stage. According to the kind of lens, Su Type spot light uses three kinds of lens.

SUP Type Spot light combines a reflector of ellipse with a plano-convex-lens projecting a sharp light.

SUS Type Spot light projects a refreshing, beautiful light, making use of a special quality of long focus .

SUF Type Spot light (By the use of a fresnel lens) projects a slightly dim light covering a wide area,

It never happens that the life of an electric bulb is shortened even if it is lighted with its head placed downward.

---

## GENERAL INFORMATION

Sturdy light sheet steel housing construction  
heat resisting lens  
baket black finish

---

CAT NO. 5500 (SUP Type)  
projection distance 10m  
lamp 100V T-76 1,000W  
plano-convex-lens 5"D 8"F  
cable captyre-cord 2mm<sup>2</sup> 2wire  
weight 8kg  
outer dimension 360×650×745mm

---

CAT NO. 5525 (SUF Type)  
projection distance 10m  
lamp 100V LG-125 1,000W  
fresnel lens 8"D 10"F  
cable captyre cord 2mm<sup>2</sup> 2wire  
weight 5.5kg  
outer dimension 305×530×570mm

---

CAT NO.5515 (SuS Type)  
projection distance 10m  
lamp 100V LG-125 1,000W  
long focus fresnel lens 8"D 10"F  
cable captyre-cord 2mm<sup>2</sup> 2wire  
weight 6kg outer dimension 305×530×570mm

---



CAT. NO 5525





## CA TYPE SPOT LIGHT

Lighting in the front of stage is very important. So a large theater needs to use spot lights of high wattage.

CA Type Spot Light uses a 2,000W incandescent electric bulb and according to the kind of lens to be used it is divided into two kinds.

CAF Type spot light uses 10" long focus fresnel lens. At the maximum opening it projects uniform and soft beams though their outlines are slightly dim.

CAL Type spot light uses 8" plano-convex-lens. This makes it possible to project the all kinds of beams from the minimum opening to the maximum opening on the stage.

So this kind of spot light is suited as the follow spot light at a big theater.

### GENERAL INFORMATION

sturdy light sheet steel housing construction.

heat resisting lens.

baked black finish

---

CAT NO. 4260 (CAF Type)  
projection distance 15m  
lamp 100V G-150 E-39 2,000W  
long focus fresnel lens 10"D 300mmF  
cable captyre-cord 3.5mm<sup>2</sup> 2wier  
weight 10kg  
outer dimension 390×625×587mm

---

---

CAT NO. 4265 (CAL Type)  
projection distance 20m~25m  
lamp 100V G-150 E-39 2,000W  
plano-convex-lens 8"D 14"F  
cable captyre cord 3.5mm<sup>2</sup> 2wire  
weight 12kg  
outer dimension 390×625×637mm

---



CAT. NO 4260





## TH TYPE SPOT LIGHT

TH Type spot light is used for hanging it on the ceiling slots and the limited spaces.

This is very light and easy to adjust for use.

### GENERAL INFORMATION

Sturdy light sheet steel housing construction  
baked black finish

CAT NO. 1067

projection distance 10~15m

lamp 100V G-125 1,000W

heat resisting plano-convex-lens 6"D 10"F

cable captyre-cord 2mm<sup>2</sup> 2wire

weight 4kg

outer dimension 310×405×380mm



CAT. NO 1067

## T-1 TYPE SPOT LIGHT

T-1 Type spot light is placed in the stage equipment and hanged over the limited space, useful for multi-purposes equipment and the limited space.

This type of light is familiar among those persons concerned with the theatrical world with its pet name 'baby', because it is light, small, easy of adjustment, and convenient of moving.

### GENERAL INFORMATION

Sturdy light sheet steel housing construction  
baked black finish

CAT NO. 1053

project distance 5~10m

lamp 100V G-95 500W

heat resisting plano-convex lens 4 1/2" D 7" F

cable captyre-cord 0.75mm<sup>2</sup> 2wire

weight 2kg

outer dimension 200×277×235mm



CAT. NO 1053



## DF TYPE SPOT LIGHT

DF Type spot light is a light and small spot light with fresnel lenses. It projects soft edge light beams. It is fit for use at the auditorium slots and the ceiling slots in a small hall.

### GENERAL INFORMATION

Sturdy light sheet steel housing construction  
baked black finish

CAT NO. 5553

projection distance 3~8m

lamp 100V T-64500W

heat resisting fresnel lens 6" F95mmD

cable captyre cord 0.75mm<sup>2</sup> 2wire

weight 3kg

outer dimension 220×325×232mm



CAT. NO 5553

## FP TYPE FOOT SPOT LIGHT

FP Type foot spot light is placed before the foot light and used for projecting the strong-touch light from the floor surface.

This is designed to have its beautiful appearance and its height to be hidden behind the foot light.

### GENERAL INFORMATION

Sturdy light sheel steel housing construction

CAT NO. 5521

projection distance 3~5m

lamp MG-95 C-13 F-27 300W

heat resisting fresnel lens 4.5"D 3.1"F 80mmF

cable captyre-cord 0.75mm<sup>2</sup> 2wire

weight 2.6kg

outer dimension 175×200×240mm



CAT. NO 5521

## SEB TYPE ARC SPOT LIGHT

The follow spot light is indispensable for placing a subtle emphasis on a dramatic show and a brilliant accent on a musical show or a ballet.

The direct current electricity is used to turn on SEB Type ARC Spot light, making the brightness of the light unabated.

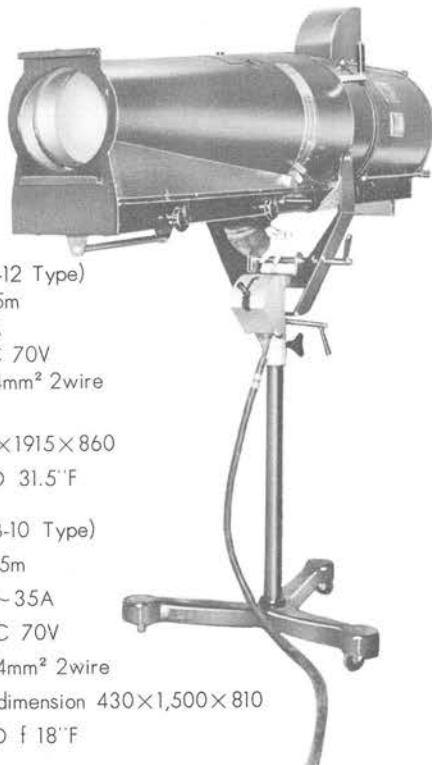
The light has a handle built at the back, which operates a framing shutter and iris for operating control, projecting sharp edge beams which range from close-up to live size.

### GENERAL INFORMATION

sturdy sheet steel housing construction

heat resisting lens

baked black finish



CAT NO. 5621 (SEB-12 Type)  
projection distance 45m  
capacity ampere 50A  
voltage on source DC 70V  
cable capacity-cord 14mm<sup>2</sup> 2wire  
weight 94.3kg  
outer dimension 430×1915×860  
lens 4½"D 5.9F 8"D 31.5"F

CAT NO. 5622 (SEB-10 Type)  
projection distance 35m  
capacity ampere 30~35A  
voltage on source DC 70V  
cable capacity-cord 14mm<sup>2</sup> 2wire  
weight 24.7kg outerdimension 430×1,500×810  
lens 4½"D 5.9F 8"D f 18"F

CAT. NO 5621

## KLS TYPE ARC SPOT LIGHT

Compared with the light projected by SEB Type, KLS Type arc spot light project more soft edge beams.

This spot light serves to impress strongly the audience in a dramatic show by closing up the leading actor.

In case where 100V alternating current and economizer are used together, the line current, about one half of arc current in strength, is good enough to operate this arc spot light.

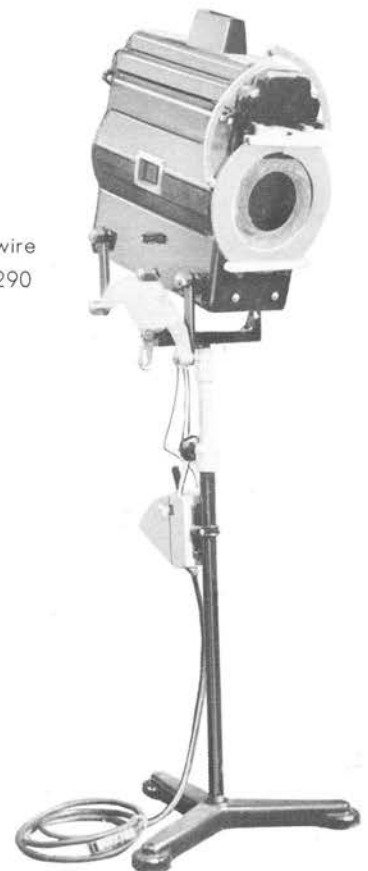
The shape and the size of the projected surface can be freely adjusted.

### GENERAL INFORMATION

sturdy sheet steel housing construction

baked black finish

CAT NO. 5601  
projection distance 15~20m  
heat resisting lens 8"F12"D  
capacity ampere 50A~60A  
voltage on source AC 100V  
cable capacity cord 14mm<sup>2</sup> 2wire  
outer dimension 640×510×290



CAT. NO 5601





## ER TYPE SHARP EDGE SPOT LIGHT

ER Type sharp edge spot light is a follow spot light suitable for being used at a distance of 10 to 15 meters.

It operates efficiently, and its iris shutter divides the size and figure of the projected surface with ease

It is easy to adjust the spot light, too.

### GENERAL INFORMATION

sturdy sheet steel housing construction

heat resisting lens

baked black finish

---

CAT NO. 5507 (ER-2,000W)  
projection distance 15~20m  
lamp 100V T-96 P-60 2,000W  
plano-convex-lens 8"D 14"F  
8"D 18"F  
cable captyre-cord 2mm<sup>2</sup> 2wire  
weight 25kg  
outer dimension 340×800×525

---

---

CAT NO. 5506 (ER-1,000W)  
projection distance 15~20m  
lamp 100V T-76 P-60 1,000W  
plano-convex-lens 8"D 10"F  
cable captyre-cord 3.5mm<sup>2</sup> 2wire  
weight 15kg  
outer dimension 340×800×500

---



CAT. NO 5506

# VRX TYPE XNON AUTO LIGHT

Recently the automatism in the industrial world of our country is advancing very rapidly.

In the theatrical world which art is produced, the automatism is taken to the structure of a theater VRX type is the spotlight which follow acting, and the adjustment of projected surface or focus is followed by one man remote control.

The light source of this type uses a Xnon lamp .

The light of Xnon lamp is resenble cloesly to the light of the sun and the candle power or the color temperature is very high, so Xnon lamp can show the color of actors skin and the dress very beautifully.

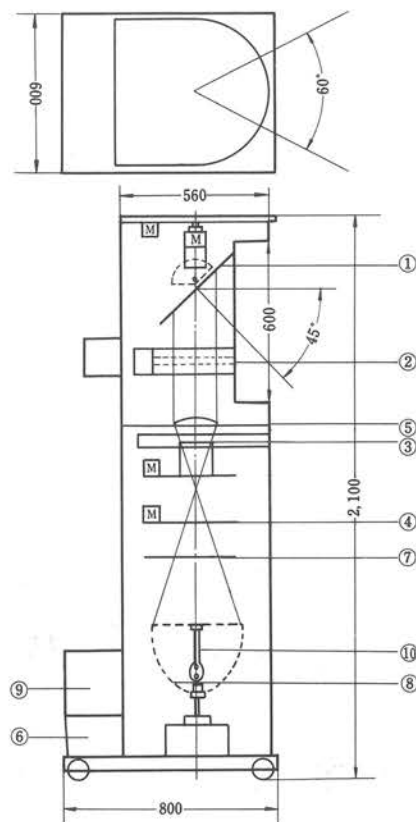
Beams from the light source is gathered by elliptical shape reflector.

You can do remote control of the irus shutter the mechanism of focus adjustment, the follow mirrer and magno color (color changer) by oprating one handle right and left, up and down.

## VRX Type Xnon

CAT NO. 5643

- ① follow mirror for operating right and laft, up and down
- ② magno color (color changer)
- ③ adjustable lens for focus.  $3\frac{1}{2}$ " D200mmF
- ④ iris shutter 75mm
- ⑤ plano-convex-lens 6" D 110mmF
- ⑥ fan
- ⑦ filter that absorb heat
- ⑧ elliptical misser
- ⑨ starter
- ⑩ XNON lamp.





## CF TYPE FOOT LIGHT

CF type foot light is a long strip instrument which is placed on one corner of the front stage. This foot light is designed so as to project a shadowless illumination to the stage. It is fit in the caved stage, and its length differs according to the condition of the theater, usually, we make it to be long enough to match with the dimension of the stage.

It is made in a compartment type and the length of the compartment spun is 150mm.

For the side stage, CF-4 type which has a wider project angle than CF type is used.

### GENERAL INFORMATION

sturdy compartment type steel housing construction.

baked black finish

CAT NO. 185 (CF-Type)

CAT NO. 188 (CF-4 Type)

lamp 100V A-60W

cable captyre-cord 3.5mm<sup>2</sup>~5.5mm<sup>2</sup> 2wire

wired for 3~4 colors

weight of 1 meter 5kg

## DA TYPE DISAPPERING FOOT LIGHT

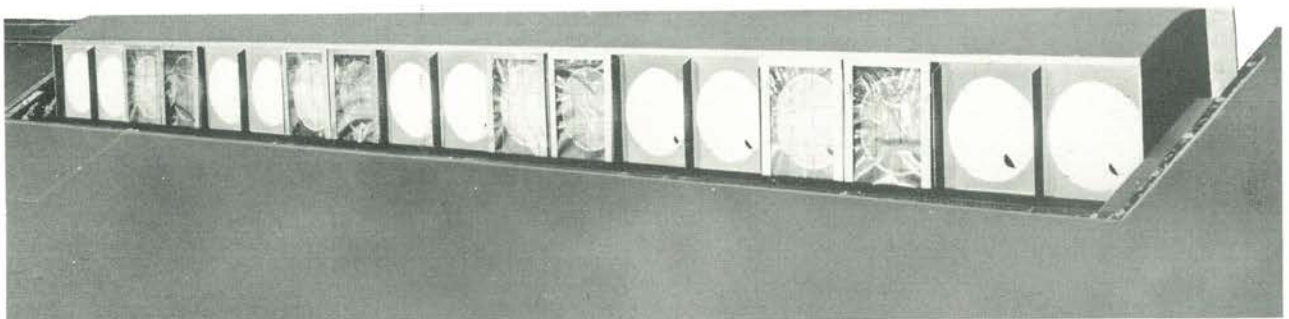
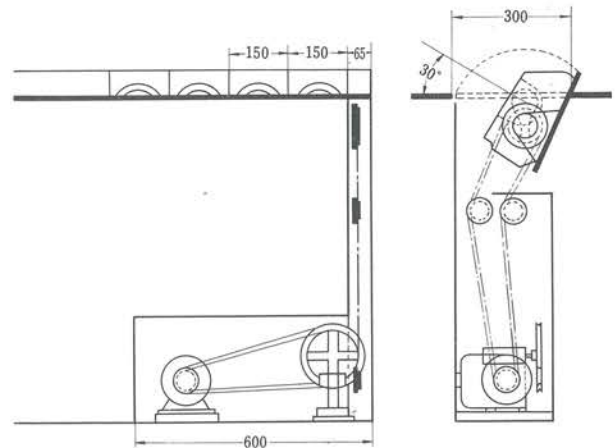
When not in use, the foot light must be hidden under the stage floor, putting an cover on it.

The bottom of DA Type Disappearing Foot Light is consists with an iron plate.

When not in use, AC100V, 400W motor is run fast.

The foot light is hidden under in the same uay surface the stage flower.

The construction of this typeis same as CF Type.



CAT. NO 185



## BCI TYPE BORDER LIGHT

This type of border light is designed to generally illuminate the stage from over head and to provide maximum amount of the light all over the stage not to waste the light.

It is made in a compartment type.

Usually one unit of this type of Border Light uses three or nine lamps, and in combination of them in proportion to the demension of the stage.

### GENERAL INFORMATION

sturdy compartment type steel housing construction.

cable captyre-cord 5.5mm<sup>2</sup> 2wire

wired for 3~4 color

baked black finish

CAT NO. 6126 \_\_\_\_\_

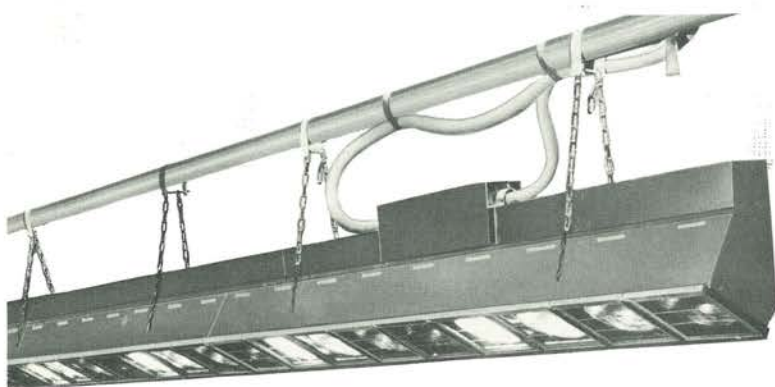
lamp 100V A-70

weight of 1m 10kg

CAT NO. 6127 \_\_\_\_\_

lamp 100V 150W~200W PS-80

weight of 1m 10kg



CAT. NO 6127

## IE TYPE CYCLORAMA LIGHT

IE type cyclorama light is hanged on the batten plugging strip that is over the stage as an upper cyclorama light.

This type of cyclorama lighting system uses from 500W~1,000 watts lamps, projecting a uniform power of light at an angle of 60 degrees by means of an illuminating elliptical reflector.

It is appropriate to set this lighting system 3~4 meters before the cyclorama.

### GENERAL INFORMATION

sturdy light sheet steel housing construction

baked black finish

CAT NO. 5342 \_\_\_\_\_

projection distance 3~4m

lamp 100V PS 1,000W

cable captyre-cord 2mm<sup>2</sup> 2wire

weight 5kg outer dimension 290×290×360

CAT NO. 5341 \_\_\_\_\_

projection distance 3~4m

lamp 100V PS 500W

cable captyre-cord 0.75mm<sup>2</sup> 2wire

weight 3.5kg

outer climension 290×290×336



CAT. NO 5341



## HI TYPE CYCLORAMA LIGHT

HI type is set on the stage floor for use as a lower cyclorama light.

The lighting bodies are made in compartment type and equipped with reflectors.

It is possible to project uniform strength of lights at an angle of 90 degrees by this type cyclorama light with elliptical reflectors.

Moreover, HI type cyclorama light is suitable to be set about three meters in front of cyclorama.

### GENERAL INFORMATION

sturdy compartment type steel housing construction

baked black finish

wired for 3 colors

cable captive-cord 5.5mm<sup>2</sup> 2wire

CAT NO	Quantity	LAMP	Outer dimension (mm)	Weight
5323	100W×12	A-70	165×2,000×220	13.6kg
5324	100W×6	"	165×1,000×220	7.5
5325	100W×3	"	165×500×220	4.1
5320	200W×12	PS-80	225×2,700×330	31.2
5321	200W×6	"	225×1,250×330	17.2
5322	200W×3	"	225×675×330	9.4



CAT. NO 5321



## NUC TYPE FLOOD LIGHT

Nuc type is ideal to be hung on the overhead pipe bottom as an upper cyclorama light and illuminating part of the stage as a flood light.

This type of flood light is small and light so it is a mobile equipment.

It provides uniform illumination at an angle of 60° by illuminate elliptical reflector.

### GENERAL INFORMATION

study light sheet steel housing construction

baked black finish

CAT NO. 5302

lamp 100V PS-80 200W

cable captyre-cord 0.75mm<sup>2</sup> 2wire

projection distance 1~3m

weight 1.3kg

outer dimension 220×220×263



CAT. NO 5302

## CT TYPE STRIP LIGHT

The make of CT type is the same as that of border light or a foot light.

It is made into a light and small one to be easily transported.

There are three kinds by length such as those of 950mm, 1,840mm, and 2,750mm.

CT type strip light is placed between cyclorama and grandrow, and serves to express solid delineation. It is also good to illuminate the closed range in the set.

### GENERAL INFORMATION

sturdy light compartment steel housing construction.

baked black finish

lamp 100V A-60 60W

cable captyre-cord 3.5mm<sup>2</sup> 2wire

CAT NO	length	wired	weight
256	950mm	2 color	3.5kg
258	1,840mm	"	6.8kg
259	2,750mm	"	10.2kg



CAT. NO 258





## EFFECT MACHINE

This is an effect machine which projects animated scenic illusions such as waves clouds, snow, rain, flames, with a project spot light or an artgraph as a light source and with a disc.

Beams of light are collected by a condenser holder. The picture of disc on which wave and clouds are painted is projected upon a screen by an objective lens.

This can produce of animated scenic illusions such as moving clouds by turning the disc and the speed of turning it is controled.

There are three types of effect machines such as those of VS, NC, and RP.

VS type is very effective for reflecting clouds waves, and snow etc.

NC type has an effect on projecting the pictures

of swirls and revolving wreaths.

RP type produces the effect of ripples and animated scenic illusions of water leaping

### GENERAL INFORMATION

sturdy light steel case construction  
motor balancing motor  
baked black finish

#### VS TYPE

CAT NO.	2901	10minutes for one rotation	±50%
	2902	3 " " "	"
	2902	1 " " "	"
	2903	1 " for two	"
	2905	1 " for five	"

#### NC TYPE

CAT NO	2022	1 " for one	"
	2022	1 " for three	"

outer dimension 520×500×147

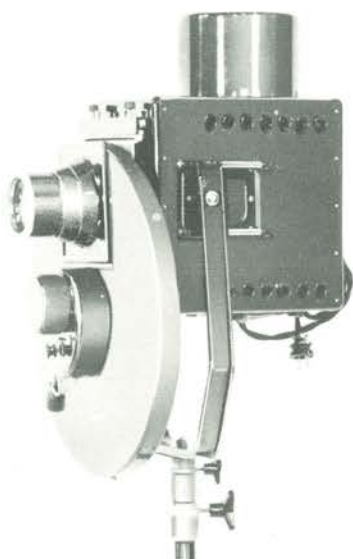
weight 5.4kg

#### RP TYPE

CAT NO. 3021

weight 3kg

outer dimension 365×220×95



CAT. NO 2901



CAT. NO 3021



## ART GRAPH

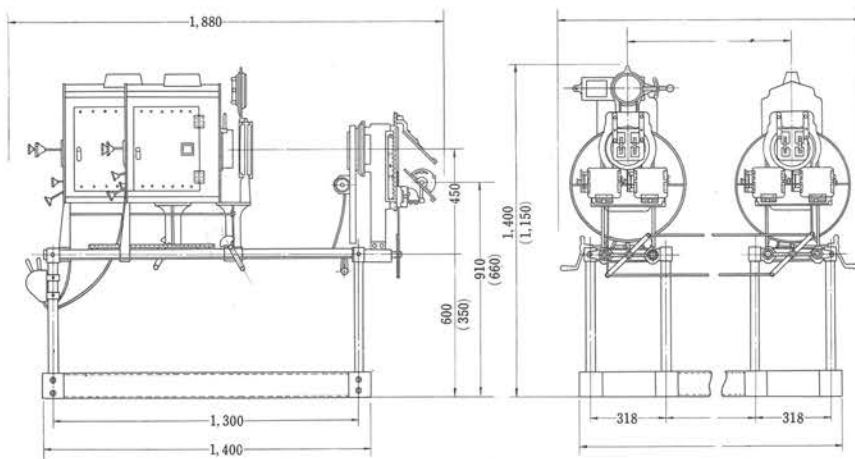
This is an effect machine for long range throw which projects light to the stage from the back of the audience-seats.

In this type, an arc light is used as a source of light with an effect machine and a disc.

By the mirror, the place and the direction projection are determined.

You can adjust freely the size of a projected picture by means of combining four objective lens with different focus.

In art graph, there are single type and compound type. Art graph is manufactured to meet an individual setting position.



## SES TYPE PROJECTORS

This is an equipment of light source which projects the effect. It treats unnecessary heat and adjusts three lens, there by projecting a bright picture and maintaining the durability of the disc.

### GENERAL INFORMATION

Study steel housing construction

baked black finish

CAT NO. 5510

lamp 100V G-125 1,000W

lens combination of plano-convex lens

5" F 8" 6" F 10" X 2

cable captyre cord 2mm<sup>2</sup>2wire

outer dimension 435×240×333

weight 15kg



CAT. NO 5510



## AURORA MACHINE

This is principally used for the production of sunlight scenic illusions such as aurora and sunlight.

A light source is set in the center and the effect drum is turned by motors.

A 500W iodine lamp is used as a light source, so the shape of this unit is very compact.

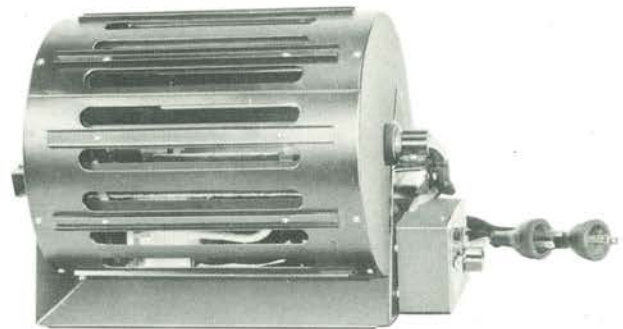
### GENERAL INFORMATION

sturdy steel drum housing construction.  
baked black finish

CAT NO. 3113

outer dimension 212×276×366

weight 9.3kg



CAT. NO 3113

## EFFECT DISC

Those original pictures which are used for an effect disc are those of snow, rain and waves.

This effect disc is made from mica resistant to high temperature.

### GENERAL INFORMATION

material mica

diameter 470mm

weight about 50g

## FIRE EFFECT

This is an effect machine which projects flames by turning an effect drum with the pattern of flames punched

By turning the effect drum fast it projects the scene of a waterfall

A 500W iodine lamp is used as a light source so the shape of this unit is very compact.

### GENERAL INFORMATION

sturdy steel drum housing construction

baked black finish

CAT NO. 3111

outer dimension 212×276×366

weight 9.3kg





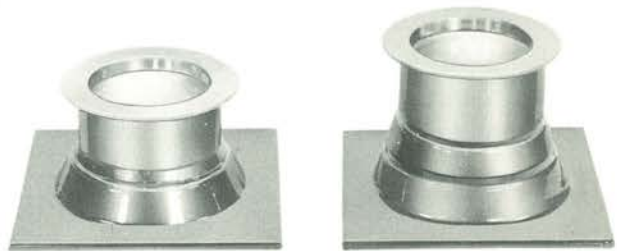
## OBJECTIVE LENS

Objective lens are held in front of an effect machine or a slide carrier, and project a picture of specified size upon a scene, Objective lens with

different focus are used according to the distance from the equipment to the scene and to the size of the picture

(size of project area for projecting distance of)

CAT NO	Lens size	angle of projection	4.5m	6m	weight
700	4"	100°	10 m	13m	0.9kg
701	6"	73°	7 m	9m	"
702	8"	58°	7 m	5.5m	"
703	10"	45°	3.5m	4.5m	"
704	12"	38°	3 m	4 m	"



CAT. NO 700

CAT. NO 701

## SLIDE CARRIER

This is an effect projector that projects a picture at a standstill.

Pictures are changed by sliding two original pictures which are held by a slide carrier.

### GENERAL INFORMATION

study light steel case construction

baked black finish

CAT NO. 3095  
outer dimension 415×225×220  
weight 2.2kg

## CONDENSER HOLDER

Condenser holder is an auxiliary lens to concentrate lights from the light source in case where CE type spot light is used as a light source for an effect machine or a slide carrier.

### GENERAL INFORMATION

study light steel case construction

baked black finish

CAT NO. 3418  
lens plano-convex 6"D 10"  
outer dimension 220×230×50  
weight 1.8kg



## JOINT BOX

Hanger instrument on the stage as border light and batten plugging strips are connected to multi-cored flexible cable in the splice box on top of the housing and other ends of the cable are connected to distribution wiring in a joint box with multi-circuits terminal with metal housing, and it is constructed as tension on the cored or cable will not be transmitted to the connecting terminals.

CAT NO. 1252 2cir 1253 3cir 1254 4cir  
1255 5cir



CAT. NO 1254

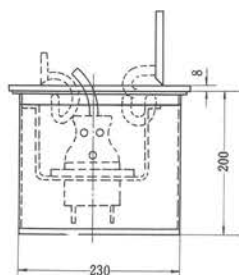
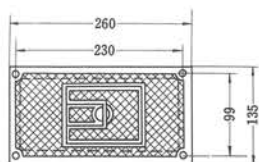
## FLOOR POCKET

Floor pocket is an out-let box installed on the stage floor to supply each lighting equipment. Floor pocket are manufactured two kind as up to 50 ampere and up to 30 ampere and each kind is four class as with single receptacle to four receptacles.

### FLOOR POCKET

(size of box)

CAT-NO.	type and from	$L_1$ (mm)	$L_2$	$W_1$	$W_2$	H
1,200	A-60A 1 way	260	230	135	75	208
1,201	" 2 "	260	230	190	130	208
1,202	" 3 "	260	230	245	185	208
1,203	" 4 "	260	230	300	240	208
1,270	A-30A 1 "	260	230	135	75	208
1,271	" 2 "	260	230	190	130	208
1,272	" 3 "	260	230	245	185	208
1,273	" 4 "	260	230	300	240	208

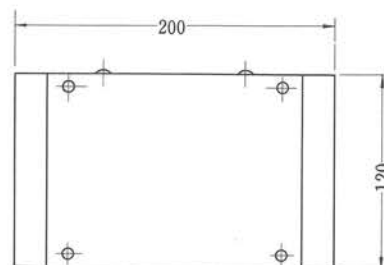
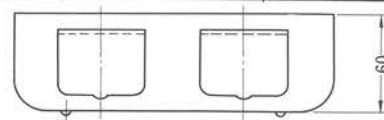


## WALL POCKET

Wall pocket is an out-let installed on the wall and frame of the stage as same use as floor pocket.

(size of box)

CAT NO	type and from	L	H	W
1275	A-30A way	100	120	60
1276	" "	200	120	60
1277	" "	300	120	60
1278	" "	400	120	60
1210	A-60A 1way	140	150	60
1211	" 2	270	150	60
1212	" 3	400	150	60
1213	" 4	530	150	60



## EXTENSION PLUG OR CONNECTOR

At the extension joint of equipment, it is usefulness to use as same plug and receptacle as floor and wall pocket, there-by We are manufactured suitable one.



CAT. NO 1237



CAT. NO 1236

## IRIS SHUTTER

Iris shutter is mechanical dimmer for control of the quantity of light ray of spot light beside it able to reduce the opening of light ray something and to shut off the light.

### GENERAL INFORMATION

sturdy light steel and castiron case construction

CAT NO	type	weight	outerdimension
601	8"	2kg	286×426×55
602	6"	1.2kg	207×304×45

## MAGNO-COLOR

Celing and balcony front light are setting on the place so difficult to operate them, then if want to change the color of light of them, we must be used remote control color change with spotlights, otherwise must be setting the spotlights as many times as number of the color used.

Marumo magno-color is the ideal color changer of spot light as remote operated equipment with reliability and soundless at the same time by the preset control board.

Magno-color can be four change by three color frames with magnets and white of beam of spot-light and magnet coil are opeated by DC 24V electric source.

Study light steel frame housing construction  
baked black finisk

CAT NO. 560

outer dimension 423×330×155

weight 5.5kg



CAT. NO 560





## HANGER BASE STAND

Hanger base stand are provided with common size receptacle for exchangeable to various kinds of lighting equipment.

CAT No. 1402 hanger are equipped with double stop device for prevents to danger.

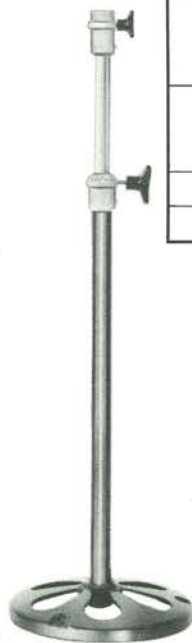
CAT No. 1441 roller caster stand with trifurcate base. adjustable height from 1 meter to about 3 meter.

### GENERAL INFORMATION

CAT. NO	adjustable	Outerdimension (mm)	weight (kg)
1401	hanger 1 3/4"	152×125×29	0.5
1402	" 2	"	"
1421	Rauncl type pipe stand 800~1,400mm	259φ × 790	6.9
1422	" 900×1,700	352φ × 890	11
1431	three forked pipe stand with caster 900~1,700	490φ × 885	11.8
1441	three forked pipe stand (with rubber waggon) 1,150~2,950	624φ × 1,140	22.5
1442	three forked pipe stand (with rubber waggon) 1,500~3,600	624φ ~ 1,410	23.7
1413	base 500W	200φ × 60	0.9
1414	base 1,000W	250φ × 65	1.3



CAT. NO 1431



CAT. NO 1421



CAT. NO 1413



CAT. NO 1402



## COLOR FRAME

Color frame or gelation color sheet holder are manufactured every size and forms of metal frame

for instert adequalely on the grooves of various equipment of the stage lighting.

### Color frame list

size	use of equipment
246 × 246	200L CE-1,000W, CEL, MS, SEB KLS, ER, CA, SU,
196 × 196	150L TH, DF, CE-500W
150 × 150	120L T-1
406 × 410	IE-1,000W
285 × 285	244L IE-500W
220 × 213	187L NUC
220 × 130	HI-200W
146 × 146	HI-1 00W
175 × 130	CT
145 × 150	CF CF-4
195 × 190	BC 1

### Plano-convex-lens list

Catno,	diameter,	focus length	use of equipment
3800	8"	10"	CEC, ER-1,000W
3801	8"	12"	
3802	8"	14"	CEL, KLS, ER-2,000W
3810	6"	10"	TH
3819	4½"	7"	T-1
3820	102 mm	152 mm	artgraph objective
382	102	203	" lens
3822	102	254	"
3823	102	305	"
3824	102	406	"
3825	102	508	"
3826	102	610	"
3827	102	711	"
3828	102	812	"
3830	89	102	objective lens
3831	89	152	"
3832	89	203	"
3833	89	254	"
3834	89	305	"
3835	89	406	"
3836	89	457	"
3837	89	508	"

# LENS LIST & LAMP LIST

## fresnel lens list

Catno	diameter	focus length	use of equipment
3875	4.5"	80 mm	FP
3870	6"	95	DF
3866	8"	120	MS
3890	8"	10"	CEF SUS
3891	8"	10"	CEO
3895	10"	300mm	CAL


## lamp list 1

type			bulb diameter	base	light center length	burning position
A	100V	100W	70	E -26	102 ± 3	
P S	100V	150W	80	E -26	123 ± 3	
P S	100V	200W	80	E -26	125 ± 3	
P S	100V	300W	110	E -39	165 ± 3	
P S	100V	500W	110	E -39	175 ± 3	
P S	100V	1,000W	165	E -39	240 ± 5	
G - 80	100V	300W	80	E -26	70 ± 3 (up ward)	
T - 64	100V	500W	64	E -26	76 ± 3 ( " )	
G -125	100V	1,000W	125	E -39	105 ± 3 ( " )	
G -150	100V	2,000W	150	G-19	125 ± 3 ( " )	
G -203	100V	5,000W	203	mogul bipost	165 ± 2 ( " )	
T -203	100V	5,000W	203	"	165 ± 2 ( " )	
MG- 95	100V	300W	95	P -28	76 (sideward)	
MG- 95	100V	500W	95	P -28	76 ( " )	
R -100	100V	150W		E -26		
R -130	100V	300W	130	E -26		

## lamp list 2

type			bulb diameter	base	light center length	burning position
D - 40	100V	500W	40	E -26	113 ± 3 (down ward)	
D - 80	100V	1,000W	80	G-19	199 ± 3 ( " )	
D - 96	100V	2,000W	96	G-19	207 ± 3 ( " )	
G -150	100V	2,000W	150	E -39	160 ± 3 ( " )	
GR-125	100V	1,000W	125	E -39		
GR-125	100V	2,000W	125	E -39		
DS-118	100V	500W	118	E -26		
DS-118	100V	1,000W	118	E -39		





Firm name

Represented by

Dine of

MARUMO DENKI. CO., LTD.

T, Marumo-president

manufacturing, designing and  
engineering of all kind of  
stage and TV studio lighting  
equipment

Adress

Head office No 1~24 kand-suda-cho  
chiyoda-ku-Tokyo

branch

Osaka Br  
No-32 kamiyama-cho  
kita-ku-Osaka

Nagoya-Br

No-16 shinsakae-cho  
Naka-ku-Nagoya

factory

Tokyo · Yamanashi

B-20



**MARUMO DENKI CO., LTD**  
TOKYO JAPAN